

# ISLE User Portal

Anytime, anyplace access to HPC application scheduling and management

## Highlights

- Job focused interface for enhanced productivity
- Integrated support for key applications and tools: FLUENT, Abaqus, ANSYS, Altair PBSPRO
- Save and reuse job templates for efficiency
- Open interface to provide support for custom applications
- No changes required for existing applications and local environment

Anytime, anyplace access to HPC application scheduling and management. The ISLE User Portal provides HPC users with an integrated interface, templates, and ease of use features to streamline job management without having to change their applications or local environment.

## Overview

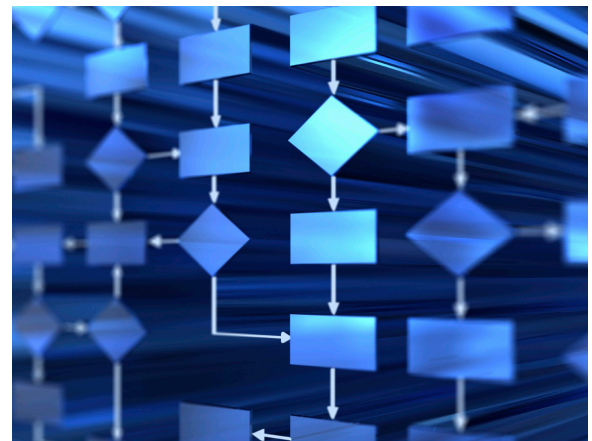
- Easy to use web-based interface available from any client
- Single, integrated interface to HPC applications and workload manager
- Job focused interface to
  - Create submit and control jobs
  - Save and reuse job templates
  - View job status and output
- Integrated support for key HPC applications and tools
  - Integrated support for FLUENT, Abaqus, ANSYS (2.0)
  - Integrated interface for Altair PBSPRO
  - Additional HPC application interfaces added in each release
- Open interface to allow support for custom applications

## Summary

The ISLE User Portal enables users to easily utilize their Linux ISV and 3rd Party applications from an agnostic, web-based, browser interface. The ISLE User Portal enables users in HPC environments to more easily and more completely manage their work and interactions between their applications and the workload manager. It increases use productivity and helps optimize organizations' use of high-performance Linux computing resources. ISLE User Portal is designed to leverage existing system software to maintain compatibility with mainstream high-performance Linux cluster applications and management software. It eliminates changes to a user's environment.

An easy to use job creator wizard allows users to expand the interface to include custom and other third party applications. ISLE User Portal is designed to manage applications in a multi-cluster environment.

ISLE User Portal is part of SGI's ISLE product set which unifies SGI and third-party management applications into a cooperative, cohesive product set for administrators and users. The ISLE product set simplifies development by facilitating interactions among services & applications, and enables control and optimization across an entire computing environment. All ISLE products are designed to be open and extensible. Additional application and system management tool interfaces will be available with each ISLE User Portal release.



## Key Features & Benefits:

- Integrated support for engineering ISV applications:
  - Computational Fluid Dynamics (CFD): ANSYS FLUENT
  - Finite Element Analysis (FEA): Simulia Abaqus
  - 3rd Party application support through Job Creator Wizard(s)
- Focused on "Ease-of-Use"
  - "Agnostic" environment deployment
  - No application installations on desktops or user systems required
  - No modifications or disruptions to production system(s)
  - Multi-Cluster support is designed into the architecture
- Components leverage existing system infrastructure and services
  - Dynamic User Authentication via LDAP
  - Supports native Linux scheduling systems
  - Designed for mainstream MPI supportability
  - Supports common Linux compiler suites
- Non-intrusive and low overhead
  - Zero memory footprint on Compute Node(s)
  - Low network bandwidth usage
  - XHTML and CSS styling built dynamically on client side
  - Event driven asynchronous HTTP request

## System Requirements:

- Supported ISV/3rd Party Software:
  - ANSYS FLUENT 6.3.x
  - Simulia Abaqus 6.7-x Standard/Explicit
  - Altair PBS Professional 9.x for UNIX batch scheduling
  - Intel MPI 3.1 (or later)
  - SGI MPT 1.19 (or later)
  - Intel C/C++/Fortran Compiler Suite
- Web Browser Requirements:
  - Mozilla Firefox 2.0.4 (or later)
  - Apple Safari 3.0.4 (or later)
  - Microsoft Internet Explorer 6 or 7
- Supported Platform(s):
  - Sx86\_64 based servers from SGI, Linux Networx, Dell, HP and other vendors
- Supported Operating System(s):
  - Novell SUSE Linux Enterprise Server 10.1 and 10.2
  - Red Hat Enterprise Linux 5.1 and 5.2



Corporate Office  
1140 E. Arques Avenue  
Sunnyvale, CA 94085  
(408) 524-1980  
www.sgi.com

North America +1 800.800.7441  
Latin America +55 11.5185.2860  
Europe +44 118.912.7500  
Japan +81 3.5488.1811  
Asia Pacific +61 2.9448.1463